



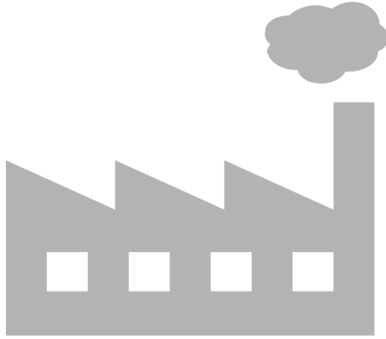
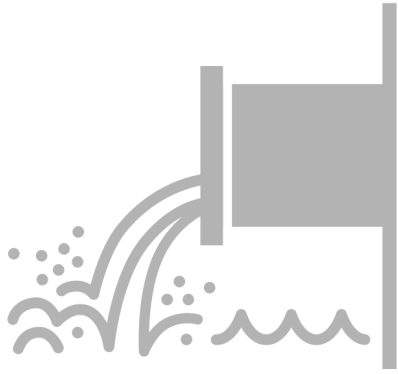
CARTAGENA

"CIENAGA DE LA VIRGEN"



DISCOVER CARTAGENA

#1 touristic destination
UNESCO world heritage site
Tourism and ecosystems
Fishing communities



CURRENT CHALLENGES FACING THE CITY

- Pollution
- Climate change
- Sea-level rise
- Water quality

ONE OF THE BIGGEST PROBLEMS IN CARTAGENA IS
THE POLLUTION AND WATER CONTAMINATION
THAT AFFECTS SOCIO-ECONOMIC DEVELOPMENT
OF THE CITY AND INFORMAL HOUSING
SETTLEMENTS.

Cartagena is known as a touristic place, where you go on vacation to have a good time, but what people doesn't know about the city are the challenges facing right now and the vulnerable places that are affected by them.

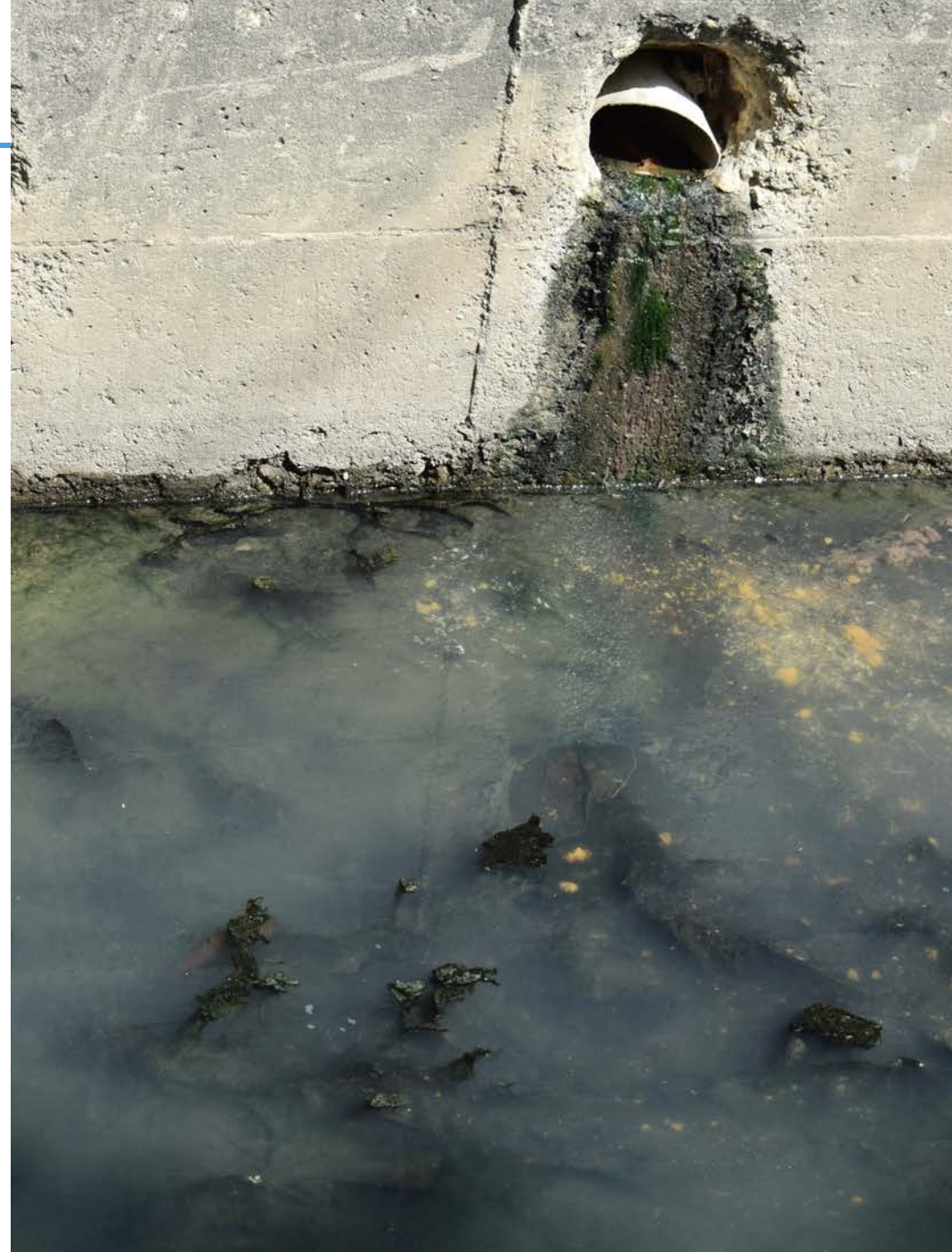
This alarming situation need to be change for the development of the city and to minimised the unemployment and the amount of people living in vulnerable places.



WATER QUALITY

Water quality is defined according to "adequacy" that depends on the use.

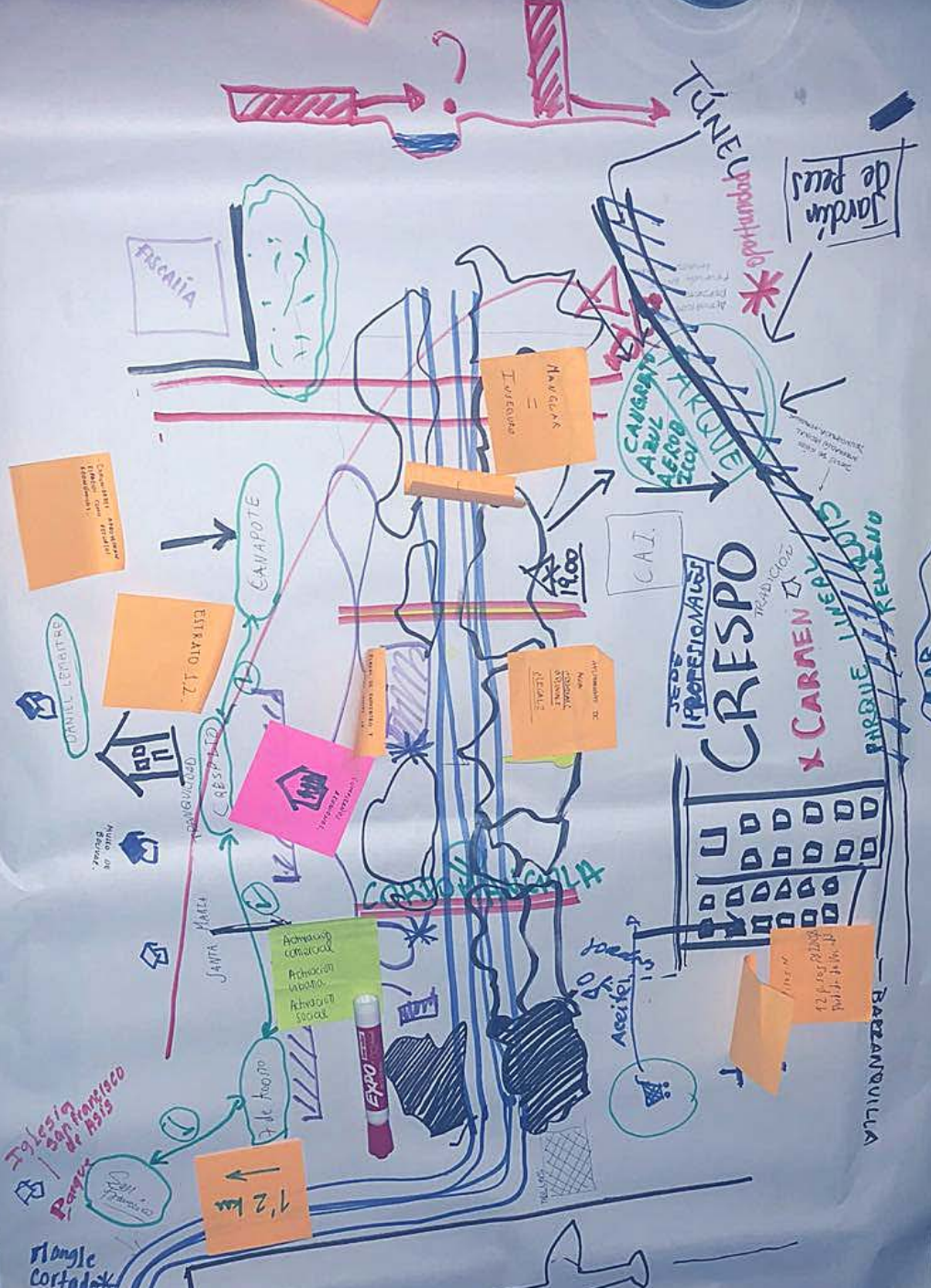
In vulnerable places such as the "Boston" neighborhood bodies of water are seen as places to deposit waste water and garbage without thinking about the consequences.



PLACE EXPLORATION

After going to the neighborhood we made a social cartography that allowed us to understand the place and discover new things.

With this we find opportunities and insights that help us to see the place from another point of view



OPPORTUNITIES TO IMPROVE THE SOCIAL, ECONOMICAL AND NATURAL NEIGHBORHOOD ENVIRONMENT

- Economic activities such as small business at home and ventures.
- Itinerant sales offer.
- Permeable and wide soils.
- Solutions to flooding and differential settling.



ANALYSIS

Analysis of the territory through movement flows which give us an indication of what is happening within the neighborhood.

These flows are generated by different circumstances such as materiality, water, security, social differences, different speeds on the streets, lack of ownership, climate.



CONCLUSIONS

- Socioeconomic differences depending on the location, the houses closest to the Pedro de Heredia avenue to the via Olaya Herrera are the original ones of the neighborhood, while the ones from that street to the perimeter are houses built in informal landfills that were made in the swamp .
- The risk and the conditions of the neighborhood vary according to the climate, when it is rainy season there are floods and when it is dry bad odors.
- The trade is related to the speed of the roads, to the road more traveled is more commercial offer than to the swamp.
- The bridges along the canal allow both sides to connect and there is a better relationship between the inhabitants of the sector.
- The permeable soil allows that the rain water return to the ground
- Thanks to the vegetation in some sectors of the canal is possible to have interactions between neighbours at the outside.
- The swamp could become a tourist attraction that generates awareness of the place and improve the conditions of the sector.

